

State of Wyoming Corner Record

(In compliance with the CORNER PERPETUATION AND FILING ACT, Wyoming Statutes, 1997, Section 33-29-140, et. seq., and the Rules and Regulations of the Board of Registration for Professional Engineers and Professional Land Surveyors)

Reverse side of this form may be used if more space is needed.

Record of original survey and citation of source of historical information (if corner is lost or obliterated). Description of corner monumentation evidence found and/or monument and accessories established to perpetuate the location of this corner. Sketch of relative location of monument, accessories, and reference points with course and distance to adjacent corner(s) (if determined in this survey). Method and rationale for reestablishment of lost or obliterated corner.

G.L.O. Record: U.S. Deputy Surveyor, Edwin James, July 22, 1870;
80.00 ChainsSet a granite stone 18 x 10 x 8 for
corner to Sections 32 & 33.

Surveyors Note: County Roads Book No. 1, circa 1908, presently located in the offices of Laramie County Public Works, does not indicate this corner as being existant at the time of the original survey of Happy Jack Road. From my research of records and a field survey which included the evaluation of long time fences in the area, I find no remaining evidence to declare the corner position obliterated.

Set: At the proportionate point from the nearest found and accepted corners east and west I set a No.6 x 30" rebar with 3/4" Aluminum Cap marked as noted below.

Aluminum Cap Markings

T14N R67W
S32 | S33
S5 | S4
T13N
1998
PLS 2927

Basis of Bearings for the ties below are based upon City of Cheyenne Control Monument "Rolling Hills" to "Clear Creek" being S02°11'45.9"W.

GPS TRIMBLE RTK SYSTEM DERIVED TIES FROM THIS CORNER ARE:

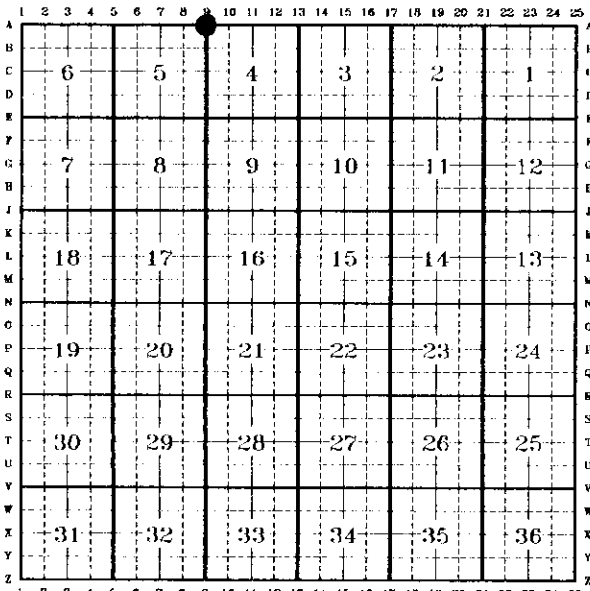
<u>POINT IDENTIFICATION</u>	<u>MONUMENTATION</u>	<u>BEARING</u>	<u>DISTANCE</u>
W.D.O.T., R.O.W. Marker	Standard concrete and Brass Disk	N02°55'24"E	23.92'
W.D.O.T., R.O.W. Marker	Standard concrete and Brass Disk	S03°12'42"W	66.04'

See back of this sheet for measurements to adjacent corners.

Date of Field Work: Dec. 7, 1998 Office Reference: A.V.I. Job No. 2-2100

240320
 COUNTY CLERK
 CHEYENNE, WY.
 DEC 14 PM 11 28

CROSS INDEX DIAGRAM



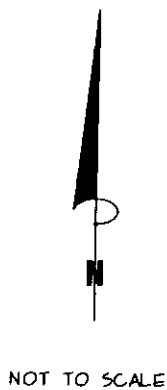
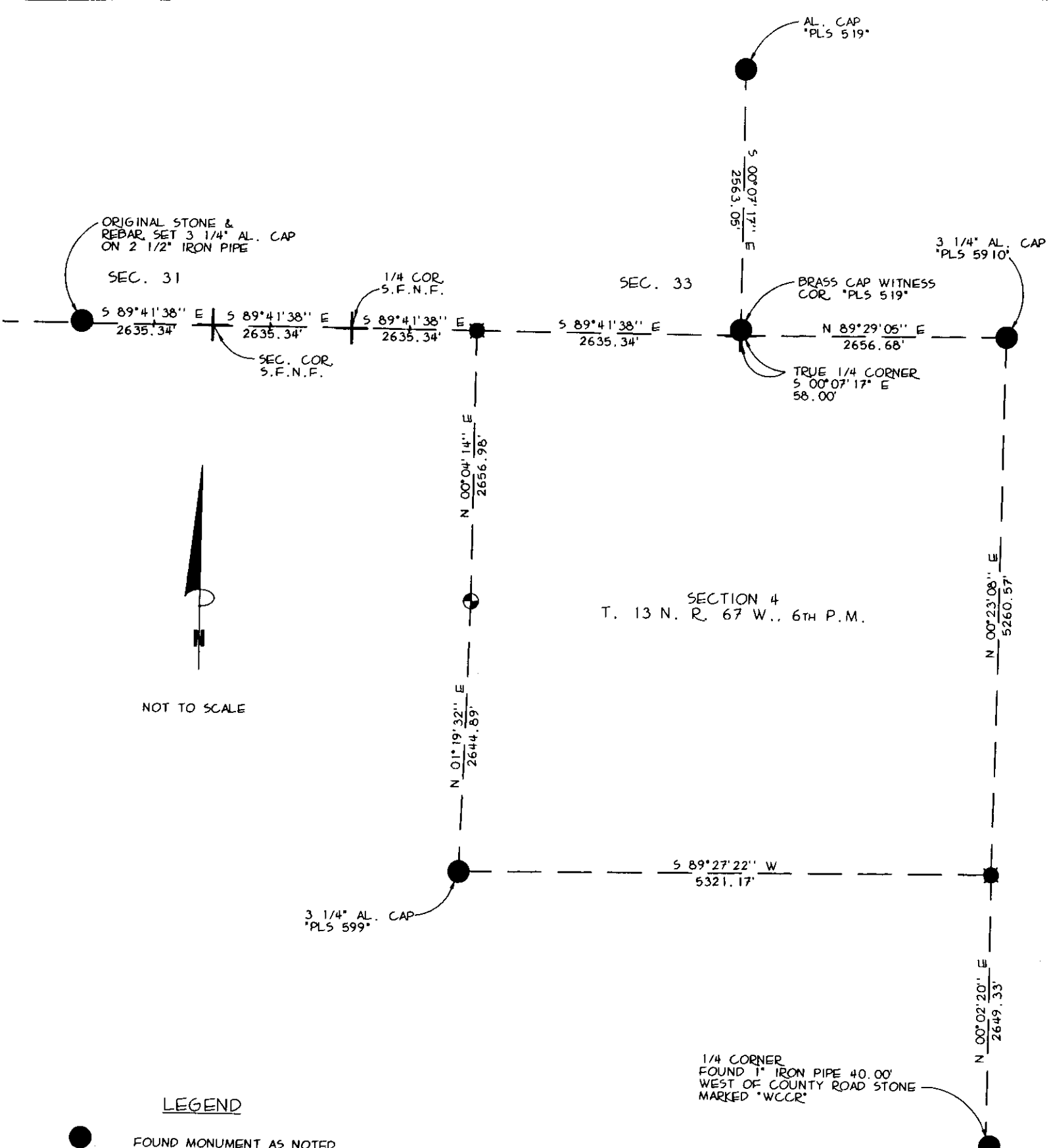
Firm/Agency, Address

Paul A. Reid, A.V.I.p.c.
2035 Westland Road
Cheyenne, WY 82001
 Telephone Number:
(307)-637-6017

This corner record was prepared by me or under my direction and supervision.



Corner Name: NW Cor. Section: 4 T 13N. R 67W. 6th P.M. Cross-Index No.: A-9



LEGEND

- FOUND MONUMENT AS NOTED
- + DIMENSION POINT, NOTHING FOUND NOTHING SET
- SET No. 6 REBAR W/ 3 1/4" AL. CAP. *PLS 2927"
- ⊙ FOUND ORIGINAL STONE RESET W/ 3 1/4" AL. CAP
- S.F.N.F. CORNER SEARCHED FOR AND NOT FOUND

SKETCH OF SECTION 4
 BOUNDARY SURVEY
 SEC. 4, T. 13 N., R. 67 W., 6TH P.M.
 LARAMIE COUNTY, WYOMING